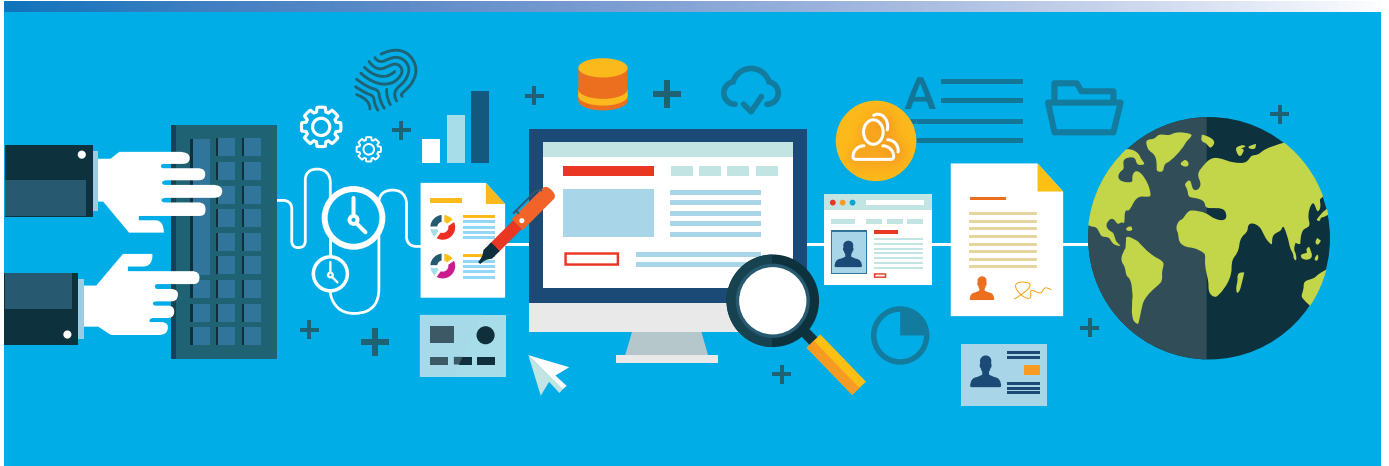


## Civil Registration Management



One of the fundamental responsibilities of governments around the world is to safeguard the identity and protecting individual liberty of their people. In serving the public and providing social and economic programs, provision of reliable and accurate information in identifying holders of nationality is crucial for the governments. Moreover, pressing National Security priorities, require improvement in law enforcement through modern system and better controls to prevent possible fraudulent activities i.e. forgery and identity theft.

PintarID Civil Registration Management is a population management solution for recording and safeguarding citizens and residents' vital life event information from birth, adoption, marriage, and divorce to death in a centralized database.

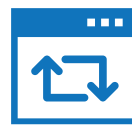
PintarID Civil Registration provides means for issuance of legal document and certificates that are used to establish and protect civil right of individuals besides assignment of unique national identification number for each citizen in assurance of a single identity for life.

PintarID ensures availability, durability and accuracy of citizen's information at all times while data sharing between authorized public agencies is conducted in a secure manner. This linkage is important to increase reliability and efficiency of public services and prevention of identity fraud. Public agencies that would benefit from this program include: police and immigration departments, Social Security, taxation and land registration authorities, election commissions and national statistics institutes.

### Advantages :



**Modernization** of national registration systems with centralized, reliable and secure population database.



**End-to-end solution** for population identification management system from capturing collection of data to the issuance of personalized documents.



**Rapid development and implementation** by incorporating ready built systems and migration of data from legacy systems.



**Cost effective** solution that provides customer with flexible financial models.



**Practical and realistic approach** in outreaching mass public to register via counter-based registration (office), self-pre-registration (internet) and mobile registration counter at remote and outskirt areas.

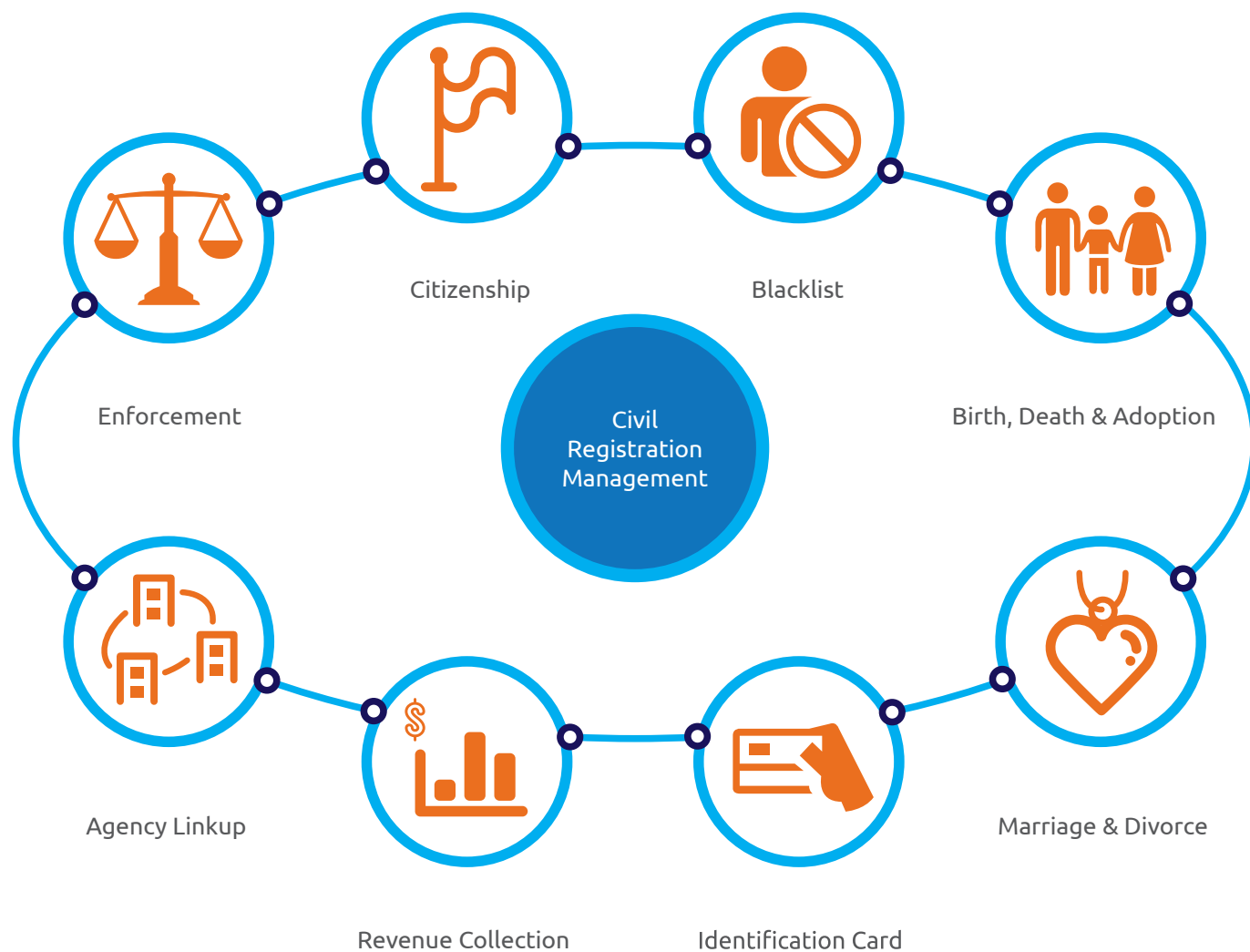


**Active partnership** with local entities to ensure highest service availability and **business continuity** for long term support

## Key System Components

PintarID Civil Registration Management is designed for universal and comprehensive requirements of civil registration and population management authorities. The system is also comprised of related PintarID modular systems such as

Enrolment, Personalization and Issuance. However, every building block of the system can be customized, based on each client's unique requirements.



## Key Features

- ✓ Centralized population information database recording all of the population's life events
- ✓ Inter-agency link up for accessing database by authorized parties through web service for online enquiry
- ✓ Biometric (finger print & iris) and demographic data capturing
- ✓ Personalization and issuance of Smart Card (National ID) and certificate (Birth, Adoption, Death, Marriage and Divorce) available as an add-on module
- ✓ AFIS (Automated Fingerprint Identification System) for fast and reliable identity authentication
- ✓ Business Intelligence analysis and reporting